

The power of a challenging vision

Geanne van Arkel – Sustainable Development

*Interface*FLOR

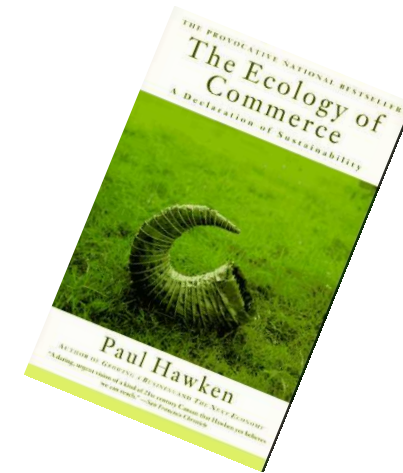


Introduction

Interface FLOR

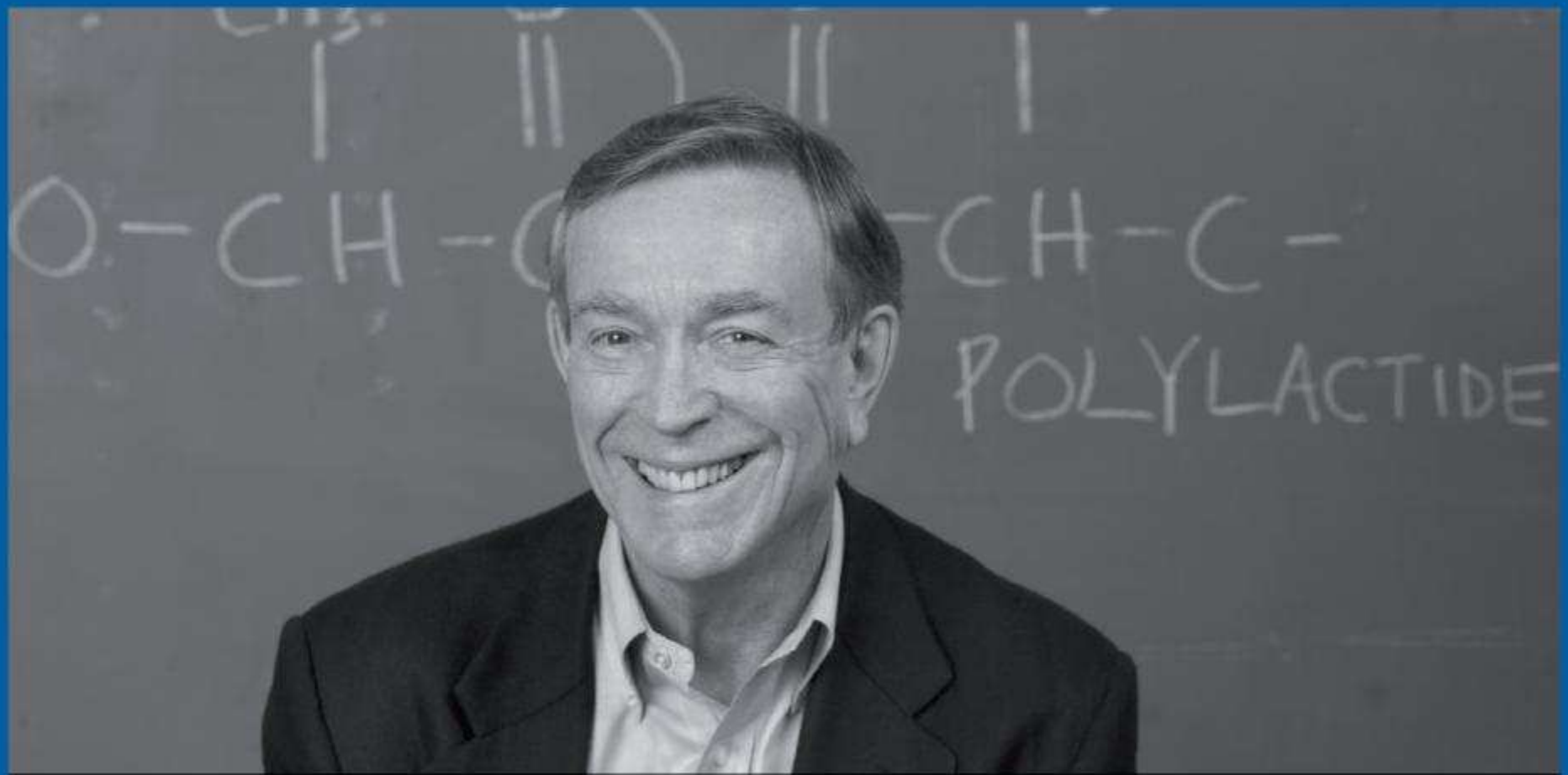
There is only *one* institution on earth large enough, powerful enough, pervasive enough, influential enough to really lead humankind in a different direction. And that is the institution of *business and industry*.”

PAUL HAWKEN



The insight

Interface FLOR



The vision

*Interface*FLOR

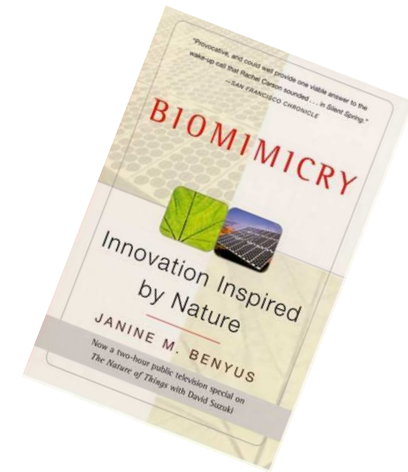


Mission Zero:
*our promise to eliminate
any negative impact our company
may have on the environment
by the year 2020.*

One goal

Interface FLOR

1. Eliminate Waste
2. Benign Emissions
3. Renewable Energy
4. Closing the Loop
5. Resource Efficient Transportation
6. Sensitizing Stakeholders
7. Redesign Commerce



Integrated approach

Interface FLOR

Reduction in waste to landfill since 1996 - **82%/unit**

Net Greenhouse Gas Emissions reduction - **35%**

Total energy consumption per unit of output down - **43%**

Renewable electricity used in manufacturing in Europe -**100%**

Global energy consumption from renewables - **40%**

Global water reduction reduced -**82%**

Recycled or biobased materials **38%**

Baseline 1996

Results

Interface FLOR



1. Efficiency

The \$438 million question



2. Innovation

Expanding to adjacent markets



3. Reputation

Used as an example by sustainability experts worldwide



4. People

Would you like to work for a carpet tile company?

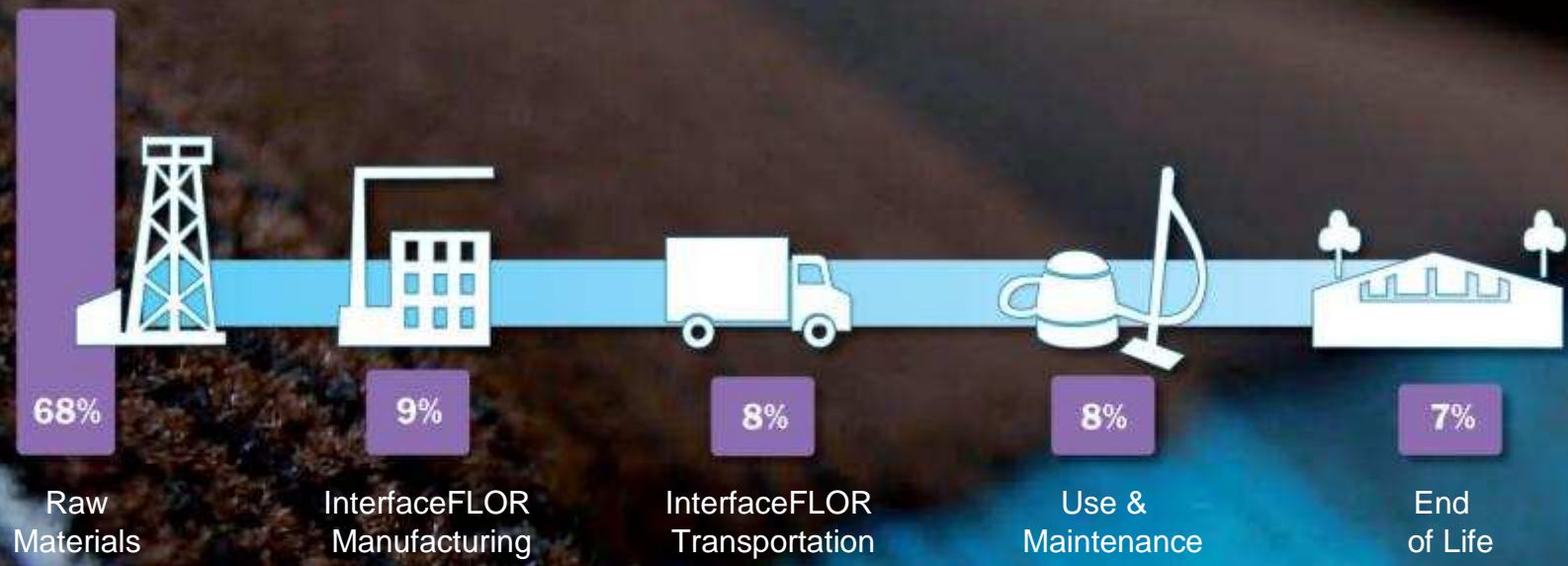


5. Future

Competitive advantage in a circular economy

It pays!

Interface FLOR



Engage your supplychain

*Interface*FLOR



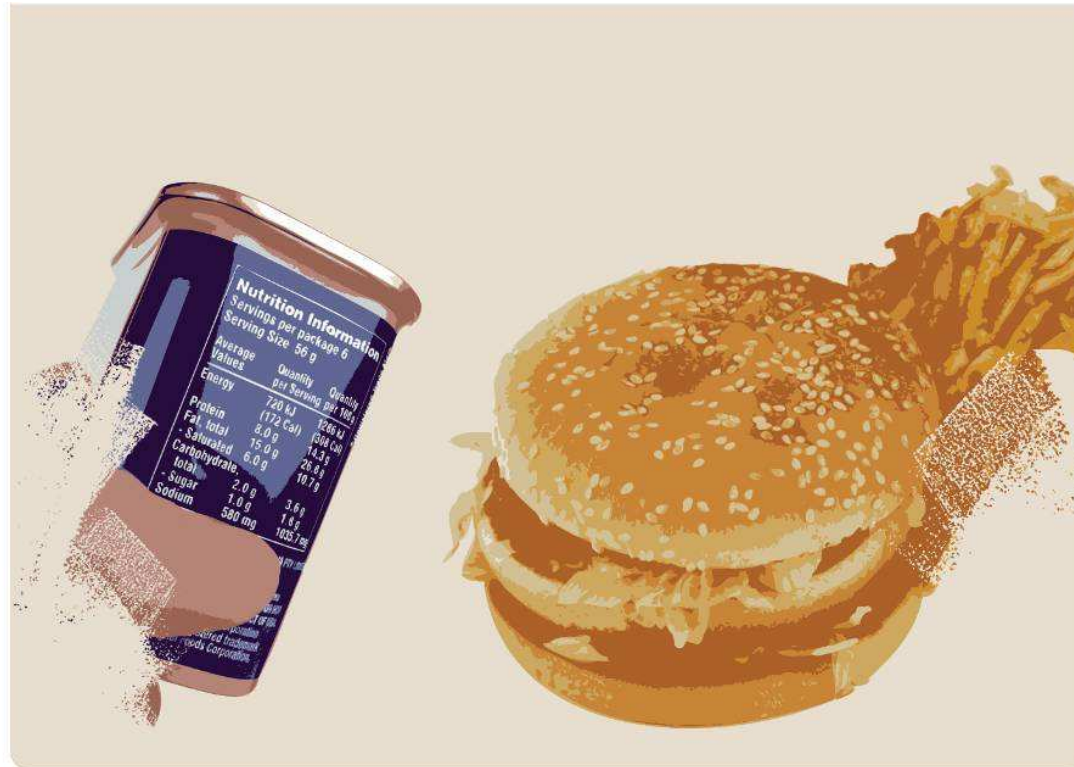
Biosfera I

Interface FLOR



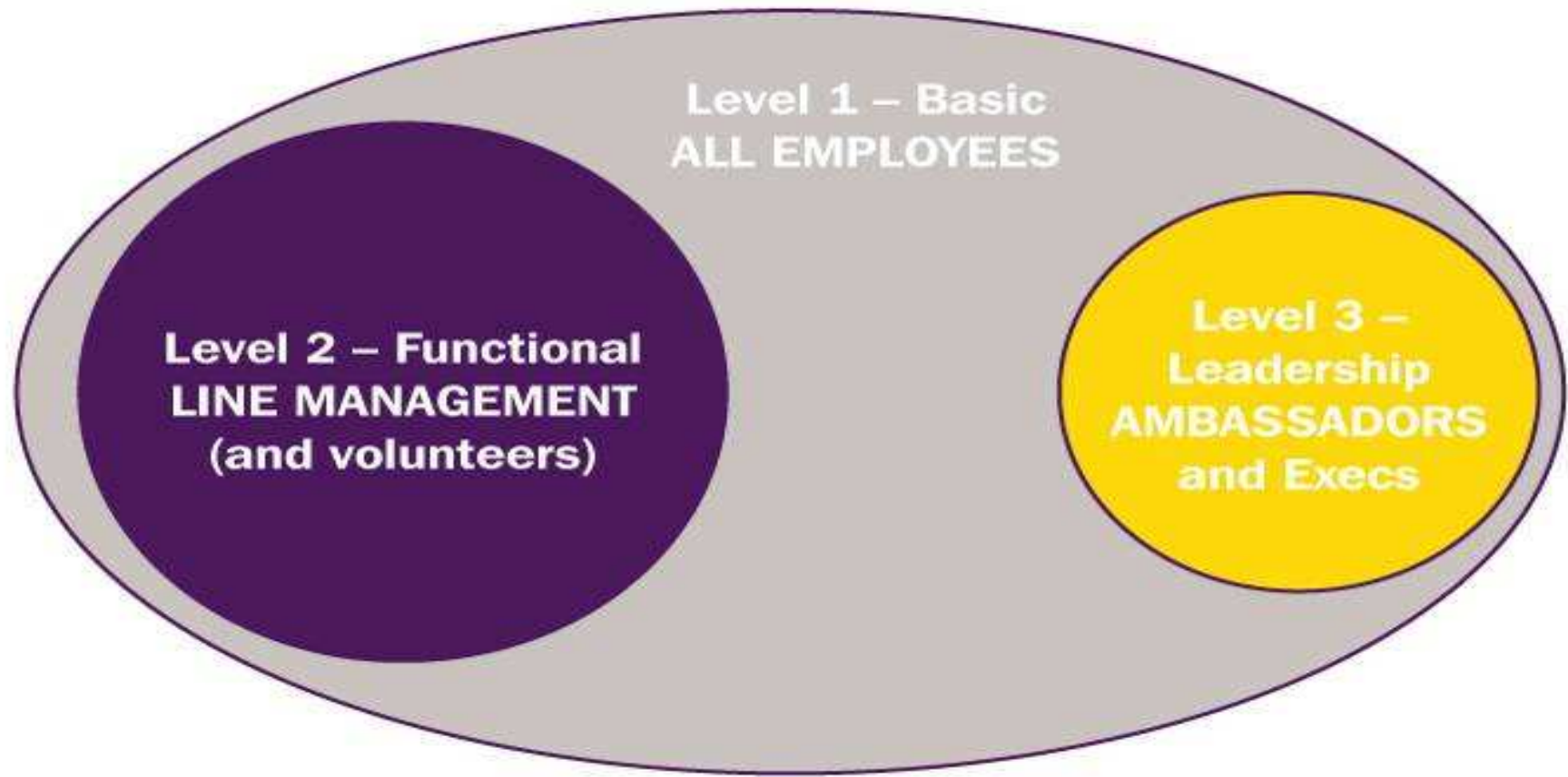
Engage your customers

Interface FLOR



Transparency

Interface FLOR



Engage your colleagues and employees

*Interface*FLOR



Appeal to a higher ground

Interface FLOR

THE BEST ARE



EVERYWHERE

Engage stakeholders

Interface FLOR



It's a relay

Interface FLOR